

# LB Smart Systems

Minimal footprint, application specific systems using proven Optec LightBench technology & components, link ATLEX superpulse excimer laser with high performance optics, accurate part handling & sophisticated process control .control



## LB-R1 Laser Trimmer

- Precision trimming/correction of IC's
- Granite base for stability
- Touchscreen PLC control
- Select ablation motif 2-300µm
- Select e.d. & shot count
- Preview overlay
- Laser burst footswitch



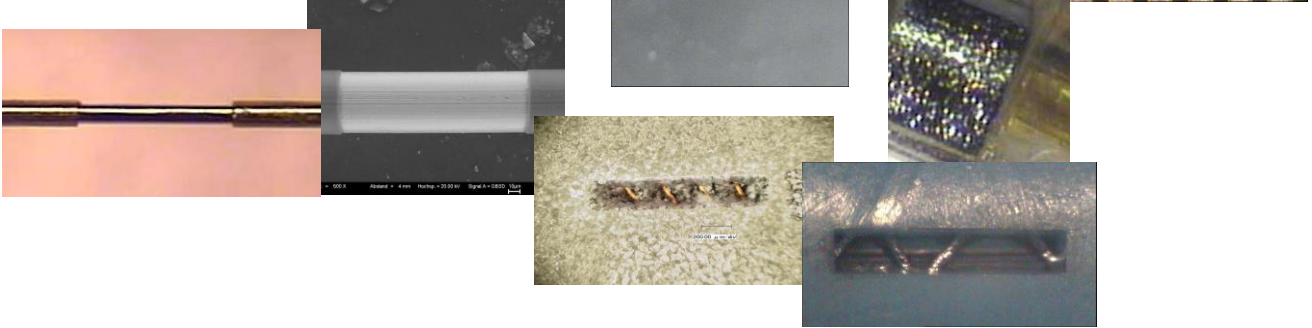
## LB-C1 Medical

- Precision drilling of membranes & catheter walls
- Precision stripping of insulation from wires or pads
- Exposing embedded conductors
- Feature size:- microns to mm
- Manual or auto load
- Debris extraction & filtering
- Laptop PC control with ProcessPower



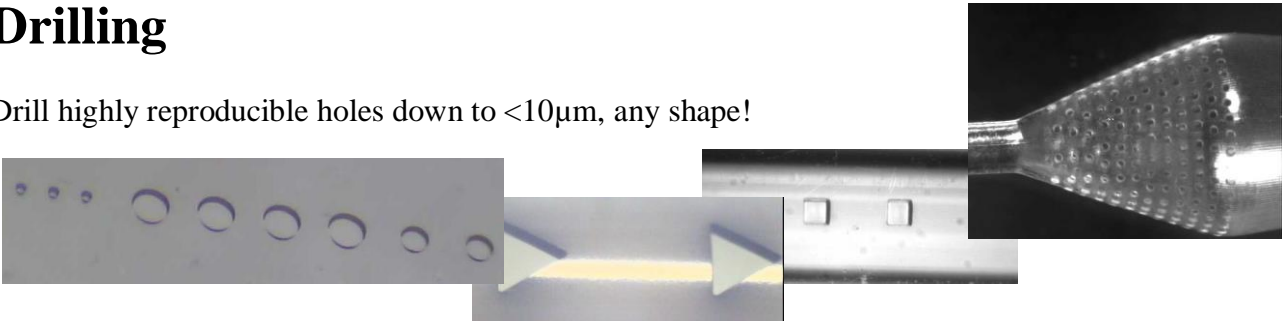
# Insulation Removal

Excellent selectivity between technical polymer & metals allows precision removal of insulation from wires, contact pads etc., even for difficult materials like silicone rubber & Teflon



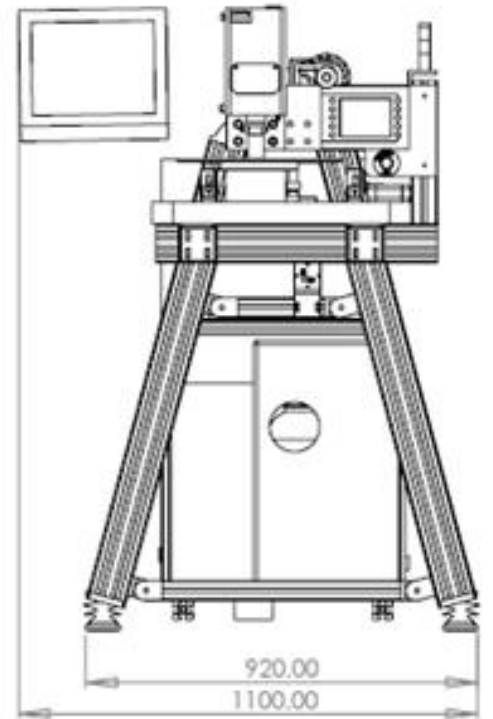
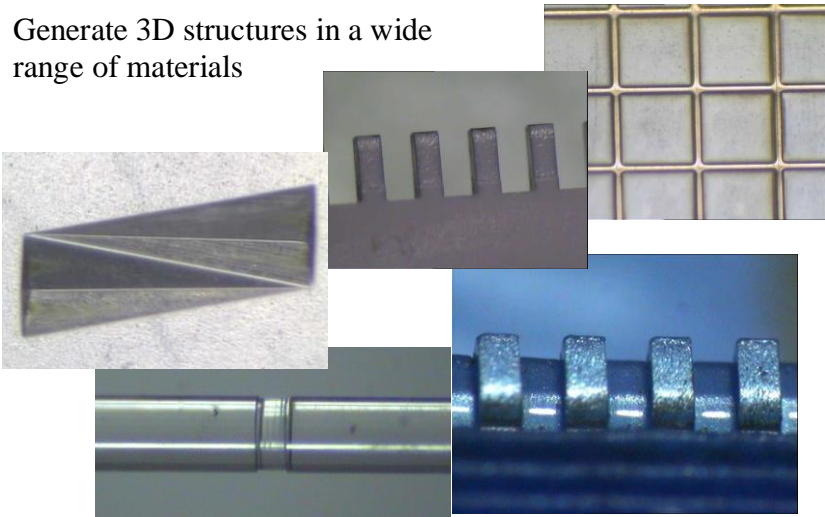
# Drilling

Drill highly reproducible holes down to  $<10\mu\text{m}$ , any shape!



# Milling

Generate 3D structures in a wide range of materials



**Use your Photons!**

**OPTEC**  
laser micromachining systems

Avenue des Nouvelles Technologies 53, BE-7080 Frameries, Belgium  
Tél. +32 (65)78.18.08 - Fax +32 (65)78.20.35 - [info@optec.be](mailto:info@optec.be) - [www.optec.be](http://www.optec.be)